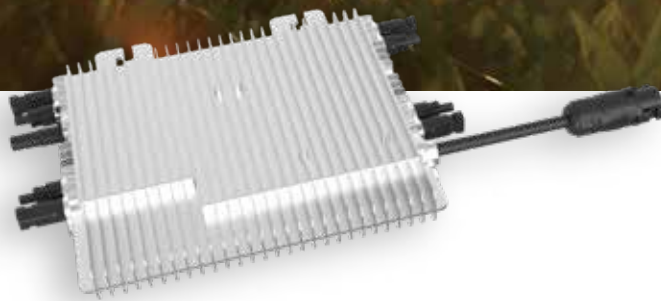
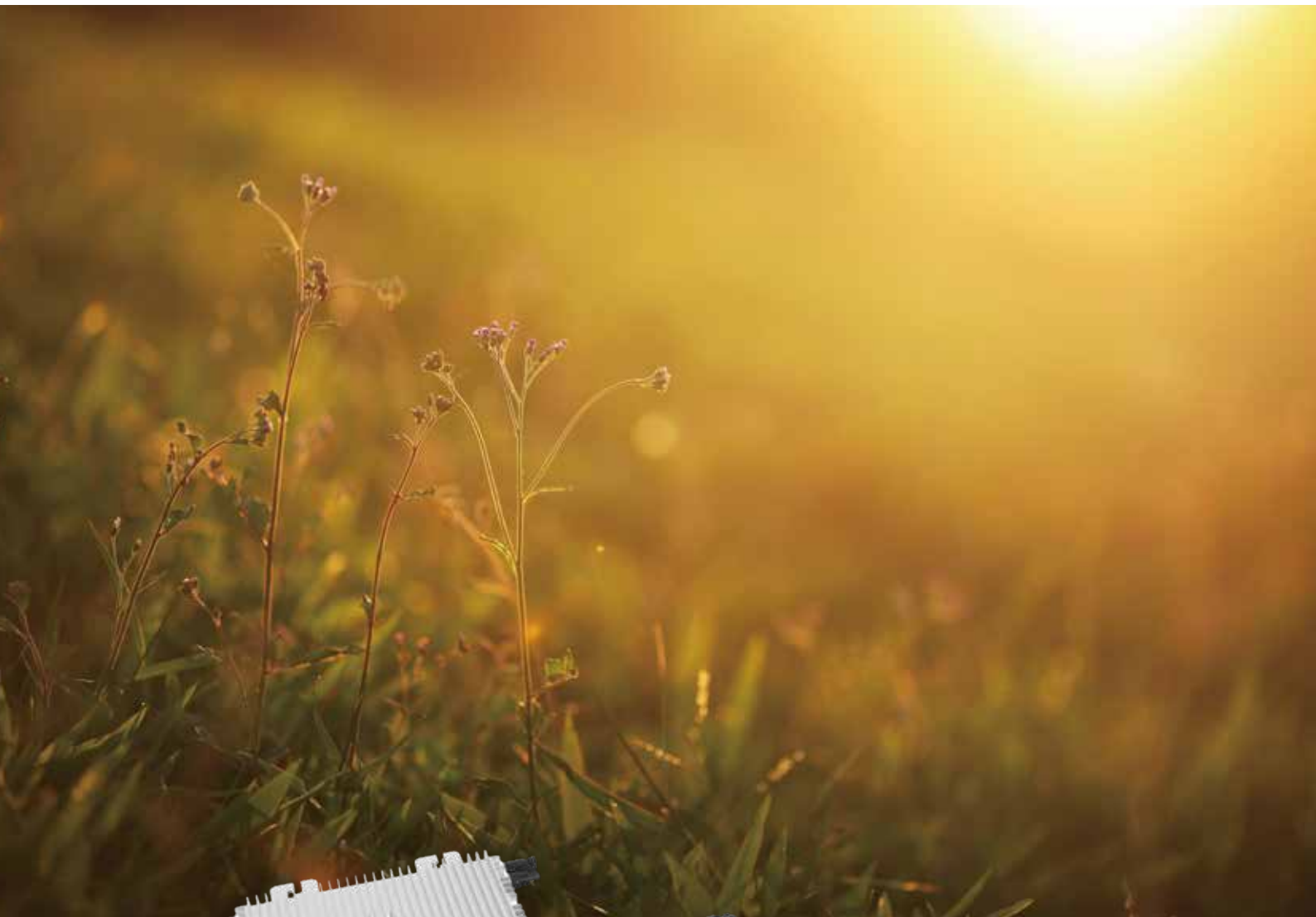


Microinverter

SUN-M130/160/200G3-EU-Q0-P1



IP67 protection degree, 10 years warranty



WIFI communication

18

Max. DC input current of 18A, adapt to 600W PV module



4 MPP trackers, module level monitoring



Rapid shutdown function

Deye

Stock Code: 605117.SH

Model	SUN-M130G3-EU-Q0-P1	SUN-M160G3-EU-Q0-P1	SUN-M200G3-EU-Q0-P1
Input Data (DC)			
Recommended Input Power (STC)	210-460W (4 Pieces)	210-560W (4 Pieces)	210-700W (4 Pieces)
Maximum Input DC Voltage (V)	60		
MPPT Voltage Range (V)	25-55		
Full Load DC Voltage Range (V)	30-55	30-55	30-55
Max. DC Short Circuit Current (A)	4x27		
Max. Input Current (A)	4x18		
No.of MPP Trackers	4		
No.of Strings per MPP Tracker	1		
Output Data (AC)			
Max. Output Apparent Power (VA)	1300	1600	2000
Rated Output Power (W)	1300	1600	2000
Rated Output Current (A)	6/5.7	7.3/7	9.1/8.7
Max.AC Output Current(A)	6/5.7	7.3/7	9.1/8.7
Grid Connection Form Rated output voltage/range (V)	L+N+PE 220V/184V-242V 230V/ 195.5V-253V		
Rated Grid Frequency/range(Hz)	50Hz/45Hz-55Hz 60Hz/55Hz-65Hz		
Power Factor Adjustment Range	>0.99		
Current Harmonic Distortion THDi	<3%		
DC Component Of Grid	<0.5%In		
Maximum Units per Branch	4	4	3
Efficiency			
Max Efficiency	96.5%		
MPPT Efficiency	>99%		
Mechanical Data			
Night Time Power Consumption	50mW		
Ambient Temperature Range	-40-65°C , >45°C Derating		
Cabinet Size (WxHxD mm)	306×258×36.5 (Excluding Connectors and Brackets)		
Weight (kg)	5		
Cooling	Free Cooling		
Enclosure Environmental Rating	IP67		
Features			
Communication	WIFI		
Grid Connection Standard	IEC 61727, IEC 62116, CEI 0-21, EN 50549, NRS 097, RD 140, UNE 217002, OVE-Richtlinie R25, G98, VDE-AR-N 4105		
Safety EMC / Standard	IEC/EN 61000-6-1/2/3/4, IEC/EN 62109-1, IEC/EN 62109-2		
Warranty	10 Years		